



***A Safer Way Forward!***





**WayCare's mission is to optimize all facets of city operations by leveraging machine learning technologies and predictive analytics**



# WayCare Transforms Crash Prevention from

*Reactive*



*Proactive*





# Waycare's Impact



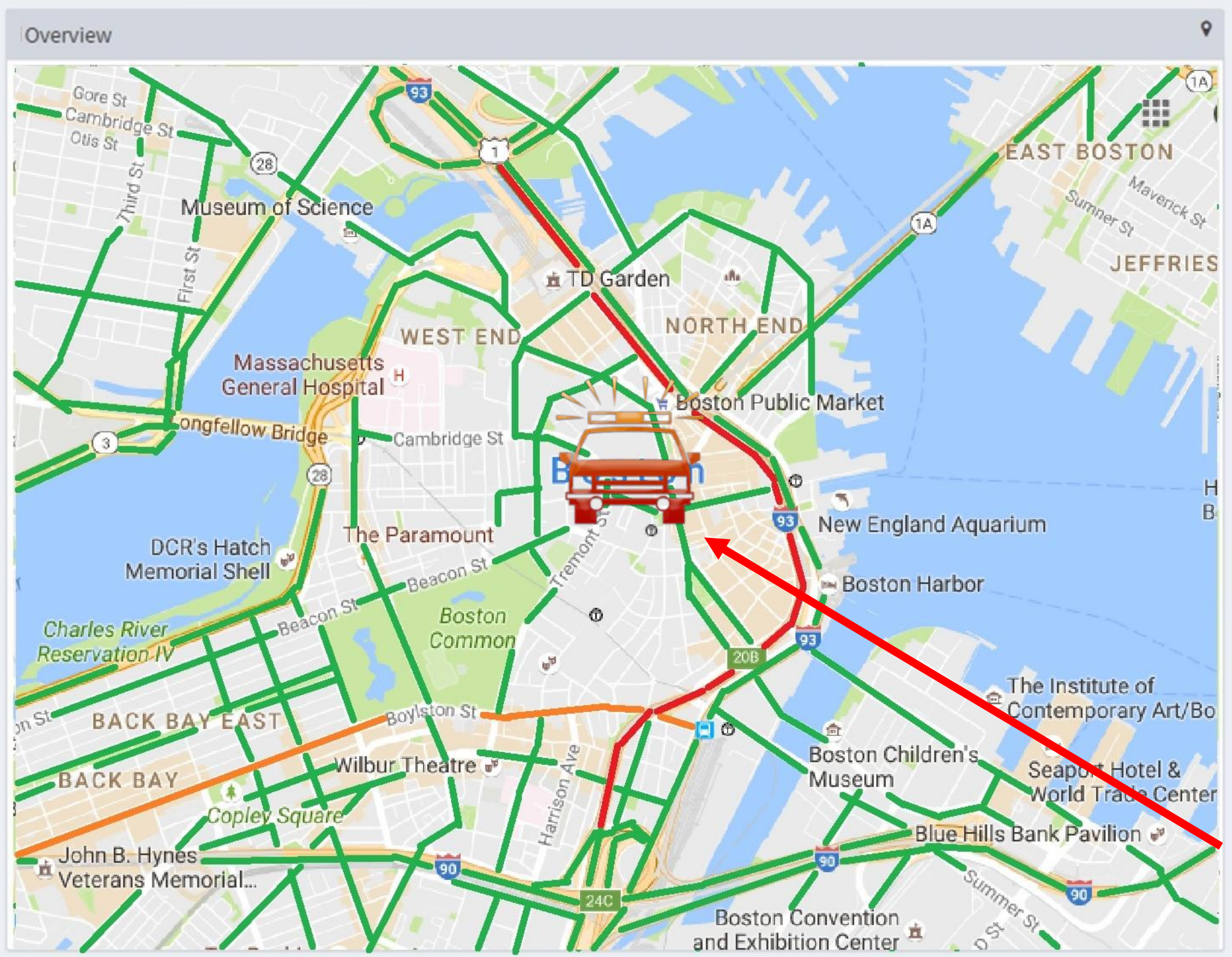


# WayCare's Machine Learning Platform for Boston

Current Status



Prediction


PREDICTION TIME: 11:00 , JUL 5, 2017





Overview

Sections




**I-93 South**  
Length: 2 Miles


 **Current status:** **High Risk**

 **Weather conditions:**

- Description: Sunny
- Temperature: 94°F
- Visibility: 9
- conditions: **Hot**

 **wayCARE best course of action:**

- Combined effort: Send scout to patrol area & decrease speed
- Estimated effectiveness: **75%**

Action	Effectiveness	Arrival time	Recomendation
Send scout to patrol area	<b>72%</b>	~2.5 minutes Scout 2.1 miles away	
Use mobile warn sign	65%	2 hours to deploy	5



# WayCare Customers and Partnerships

## Israel:

- Pilot with National transportation organization
- Pilot with an Israeli highway authority

## U.S. & Europe:

- Advanced pilot negotiations with Fort Lauderdale, and Tampa
- Ongoing conversations with several other municipalities in Europe and the U.S.







**Web: [www.waycare-smart-highway.com](http://www.waycare-smart-highway.com)**  
**Mail: [Contact@waycare-smart-highway.com](mailto:Contact@waycare-smart-highway.com)**  
**Phone: 617-778-7836, 058-755-7109**